

Parts and Instruction Manual

Ambassador 20



PREFACE

Thank you for your purchase of the new industry standard for scrubbers. Minuteman International takes great pride in offering the most dependable, reliable and best value in industrial power sweepers and sweeper / scrubbers. We set the standard.

Our Customer Service Department would like to hear from you. If you see any errors, omissions or something that needs clarification in this Parts Catalog please let us know. We are working hard towards continually improving our processes to bring you the best you deserve. Please copy the form below, fill out and comment on how you found our catalog.

Thank you!
The Minuteman International Team

Name: _____

Title: _____

Company Name: _____

Address: _____

Country: _____

Type of equipment or model number: _____

Comments: _____

Please return to:
Customer Service Manager
Minuteman International, Inc.
14N845 U.S. Route 20
Pingree Grove, Illinois 60140 USA

Phone: (800) 323-9420
Email: tech@minutemanintl.com

Technical Specifications

Model **Ambassador 20**
Models: **C8420-115**

Voltage (AC)	115V 60Hz
Current	12 Amps (115V)
Sound Level	79 dBA @ operator's ear 73.6 dBA @ 3 meters
Brush Speed	1040 RPM
Dimensions (LxWxH)	45 1/8" x 20 3/4" x 38 1-4" (114.6cm x 52.7cm x 97.2cm)
Weight (gross)	234 lbs (106 kg)

For Safety When Servicing or Maintaining Machine

- Stop on level surface.
- Disconnect the power to the machine by pulling the red Battery Connector located under the recovery tank near the batteries.
- Avoid moving parts. Do not wear loose jackets, shirts, or sleeves when working on machine.
- Avoid contact with battery acid. Battery acid can cause burns. When working on or around batteries, wear protective clothing and safety glasses. Remove metal jewelry. Do not lay tools or metal objects on top of batteries.
- Do not clean machine with a pressure washer.
- Authorized personnel must perform repairs and maintenance. Use Minuteman supplied replacement parts.

Table of Contents

Technical Specifications	3
Important Safety Instructions	6
Machine Overview	10
Operating Instructions	11
Accessory Attachments.....	11
Exploded Views	12
Tank Assembly I	12
Tank Assembly II	15
Base Assembly	18
Brush Assembly	28
Troubleshooting Guide.....	30
Wiring Diagram	32

Important Safety Instructions

COMMERCIAL USE ONLY

When using an electrical appliance, basic precautions should always be followed, including the following:

READ ALL INSTRUCTIONS BEFORE USING

WARNING: To reduce the risk of fire, electric shock, or injury:

- Do not leave appliance when plugged in. Unplug from outlet when not in use and before servicing.

WARNING

To reduce the risk of electrical shock – Do not expose to rain. Store indoors.

- Do not allow to be used as a toy. Close attention is necessary when used near children.
- Use only as described in this manual. Use only the manufacturer's recommended attachments.
- Do not use with damaged cord or plug. If appliance is not working as it should, has been dropped, damaged, left outdoors, or dropped into water, return it to an authorized service center.
- Do not pull or carry by cord, use cord as handle, close a door on a cord, or pull cord around sharp edges or corners. Do not run appliance over cord. Keep cord away from heated surfaces.
- Do not unplug by pulling on the cord. To unplug grasp the plug, not the cord.
- Do not handle the appliance with wet hands.
- Do not put any object into the openings. Do not use if any opening is blocked; keep free of dust, lint, hair, and anything that may reduce air flow.
- Keep hair, loose clothing, fingers, and all parts of the body away from openings and moving parts.
- Do not pick up anything that is burning or smoking, such as cigarettes, matches, or hot ashes.
- Do not use without dust bag and/or filters in place.
- Turn off all controls before unplugging.
- Use extra care when cleaning on stairs.
- Do not use to pick up flammable or combustible liquids such as gasoline or use in areas where they may be present.
- Connect to a properly grounded outlet only. See grounding instructions.

SAVE THESE INSTRUCTIONS

Inspection

Carefully unpack and inspect your machine for shipping damage. Each unit is tested and thoroughly inspected before shipment, and any damage is the responsibility of the delivery carrier who should be notified immediately.

WARNING

- Read Instructions Manual before operating this piece of equipment.
- To reduce the risk of fire use only commercially available floor cleaners and waxes intended for machine application
- Electrical motors and components can cause an explosion when operated near volatile materials and vapors. Do not use this machine near flammable materials such as solvents, thinners, fuels, grain dust, ect.

Electrical – 115V Model C8420-115

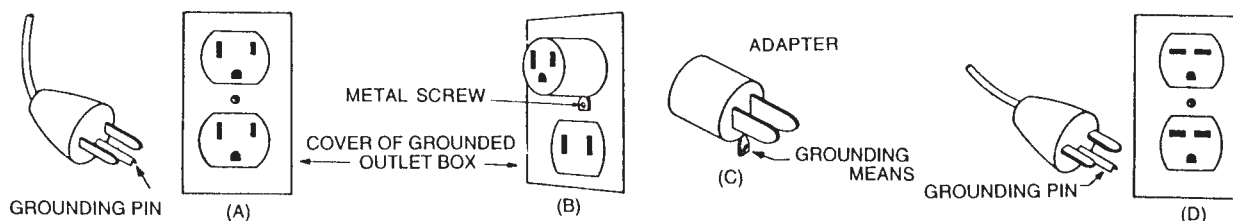
This machine is designed to operate on a standard 15 amp. 120-Volt, 60hz, AC circuit. Voltages below 105-Volt AC or above 125-Volts AC could cause serious damage to the motor.

Electrical – 240V Model C8420-240

This machine is designed to operate on a standard 16 amp. type L fused 230-Volt, 50 Hz, AC circuit. Voltages below 200-Volt AC or above 250-Volts AC could cause serious damage to the motor.

Grounding Instructions

- This floor finishing machine should be grounded while in use to protect the operator from electric shock. The machine is equipped with a three-conductor cord and three prong grounding type attachment plug to fit the proper grounding type receptacle. The green (green and yellow) conductor in the cord is the grounding wire. Never connect this wire to anything other than the grounding blade.
- Floor Finishing Machines Rated Less than 150-Volts – If the machine is provided with an attachment plug, as shown in Sketch A, it is intended for use on a 120-Volt (normal) circuit. If a properly grounded receptacle, as shown in Sketch A, is not available, an adapter as shown in Sketch C, is available and be installed as shown in Sketch B if the outlet box that houses the receptacle is grounded. Be sure to fasten the grounding tab with the faceplate screw.
- Floor Finishing Machines Rated More than 150-Volts – If the machine is provided with attachment plug as shown in Sketch D, it is intended for use in nominal 240-Volt circuit. No adapter is available for this plug.



POUR USAGE COMMERCIAL SEULEMENT MODE D'EMPLOI SECURITAIRE

Lorsque l'on utilise un appareil électrique, des précautions de base doivent toujours être suivies telles que:

BIEN LIRE LE MODES D'EMPLOI AVANT USAGE

AVERTISSEMENT - Pour réduire les risques de feu, choc électrique ou blessure:

- Ne pas quitter l'appareil lorsque la prise de courant est branchée. Débrancher de la sortie électrique lorsque la machine n'est pas en usage ou pour en faire le service.

AVERTISSEMENT

Pour réduire le risque de choc électrique - Ne pas exposer à la pluie - Entreposer à l'intérieur.

- Ne jamais laisser des enfants ou des adultes inexpérimentés faire fonctionner cet appareil.
- Garder la zone de fonctionnement libre de toute personne, particulièrement les petits enfants et les animaux. Garder les spectateurs à une distance d'au moins 7,6 mètres (25 pieds) de la zone de fonctionnement.
- Utiliser tel que prescrit dans le livre d'opération et seulement avec les attachements recommandés par le manufacturier.
- Ne pas s'en servir avec corde ou prise de courant endommagée. Si l'appareil ne fonctionne pas ou a été échappé, endommagé, entreposé à l'extérieur ou déposé dans l'eau, l'appareil devrait être envoyé à un département de service pour inspection.
- Ne pas tirer ou porter par le câble ou se servir du câble comme poignée. Ne pas fermer de portes sur le câble ou tirer le câble près d'objets pointus. Ne pas conduire l'appareil écrasant le câble et soyez certain de protéger le câble entre toutes surfaces de chauffage.
- Ne pas débrancher en se servant du câble. Pour débrancher tirer sur la prise et non sur le câble.
- Ne pas manipuler la prise ou l'appareil avec les mains mouillées.
- Ne placer aucun objet dans la sortie et ne pas s'en servir si la sortie est obstruée. Eliminer toute poussière, maillon, cheveux ou quoique ce soit qui pourrait réduire le mouvement d'air.
- N'exposer aucun cheveux, vêtement, doigts ou autres aux ouvertures de l'appareil.
- Ne rien ramasser de ce qui brûle ou de fumée tels que cigarettes, allumettes ou cendres en feu.
- Ne pas employer sans filtre de poussière ou autre en position.
- Fermer tous les contrôles après utilisation.
- Soyez très prudent lors du nettoyage d'escaliers.
- Ne pas ramasser de liquide inflammable ou combustible tel que gazoline et ne pas utiliser dans les endroits ou ces derniers pourraient être présent.
- Brancher dans une prise avec une prise de terre seulement. Voir références pour prise de terre.

**CONSERVEZ CES RECOMMANDATIONS
DE MODE D'EMPLOI**

INSPECTION

Déballer soigneusement en constatant s'il y a lieu tout dommage apparent. Chacune des pièces d'équipement est entièrement inspectée à l'usine et tout dommage de transit est la responsabilité de la compagnie de transport qui devrait être prévenue immédiatement.

AVERTISSEMENT

- S.V.P. lire le manuel d'instruction avant d'opérer cette pièce d'équipement.
- Pour réduire le risque d'incendie, se servir de ces appareils uniquement pour usage commercial et avec les produits contruits spécifiquement pour usage avec ces appareils.
- Les moteurs électriques peuvent être la cause d'explosion si ils sont utilisés près de matériaux ou de vapeurs explosives. Ne pas opérer près de matériaux inflammables tels que solvant, essence, poussière de grain etc.

ELECTRICITE - 115 Volt Modèles C8420-115

Ces appareils sont conçus pour opérer sur un circuit standard de 15 amp, 120 volt, 60 hz, circuit AC. Tout voltage en bas de 105 volt AC ou au-delà de 125 volts AC pourrait occasionner des dommages au moteur.

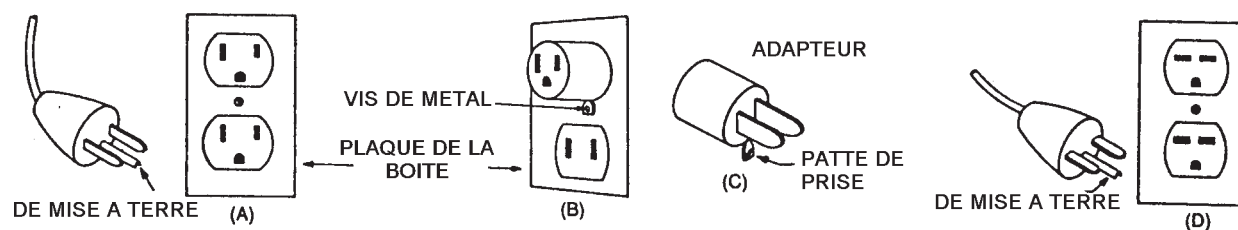
ELECTRICITE - 240 Volt Modèles C8420-240

Ces appareils sont conçus pour opérer sur un circuit standard AC de 16 amp, fusible type L 230 volt, 50 hz. Tout voltage en bas de 200 volt AC ou au-delà de 250 volts AC pourrait occasionner des dommages au moteur.

INSTRUCTIONS POUR PRISE DE TERRE

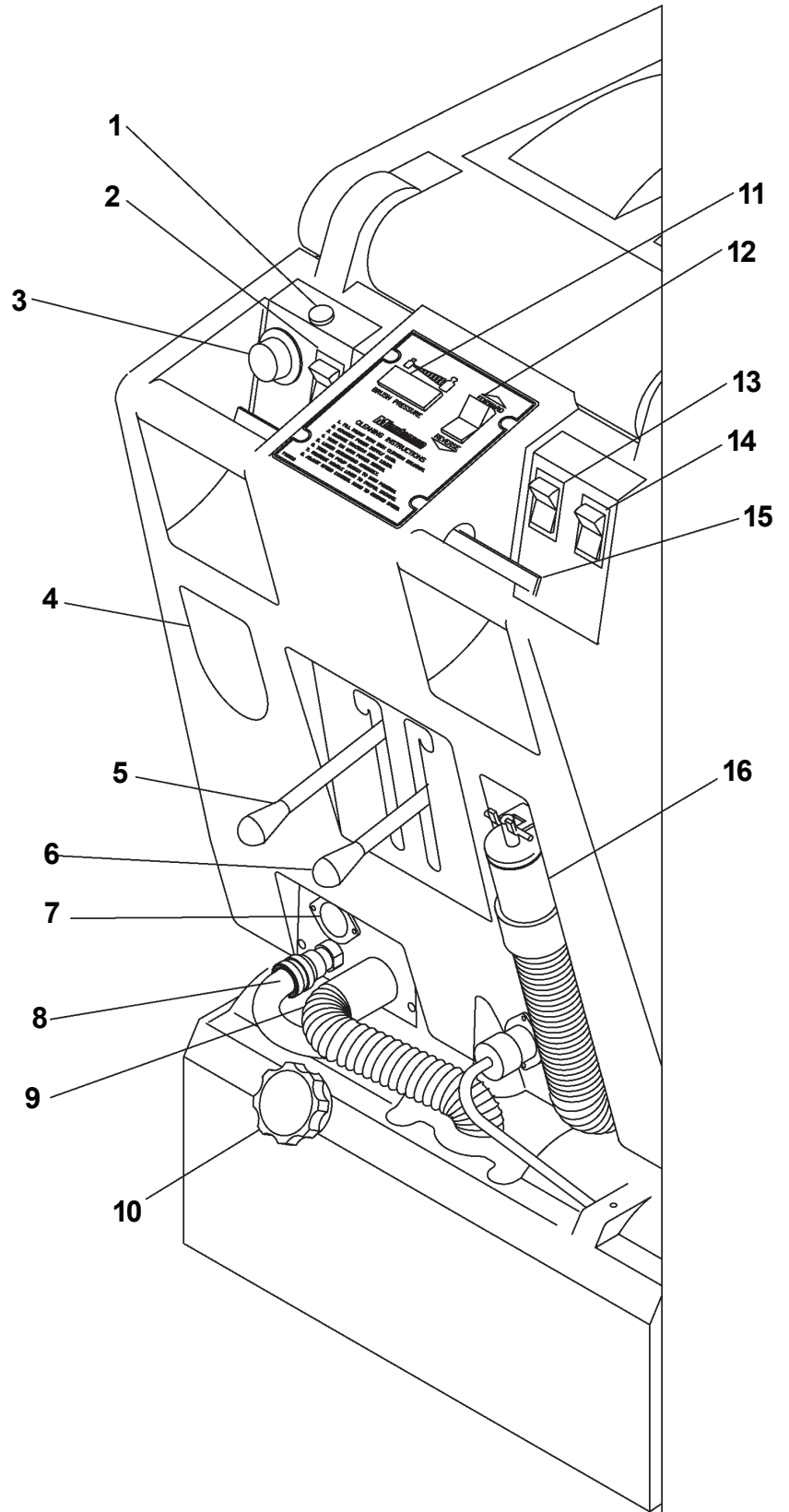
- Ces appareils doivent posséder une prise de mise à terre pour protéger l'opérateur contre les chocs électriques. Cet appareil est muni d'une corde électrique à trois fils et d'un receptacle à trois fourchons et prise de mise à terre pour s'accorder dans un receptacle avec prise de mise à terre réciproque. Le fil conducteur vert (ou vert et jaune) de la corde électrique est le fil designé comme prise de mise à terre. Ne jamais relier ce fil à un fil autre que celui de prise de mise à terre.
- Appareils estimés à moins de 150 volts - Si ces appareils offrent une prise de courant tel que dans le croquis A, ils sont destinés pour utilisation avec un circuit de 120 volts. Si un receptacle avec prise de mise à terre n'est pas disponible tel que montré au croquis A, un adaptateur tel que vu au croquis C est disponible et devrait être installé tel que montré au croquis B si la boîte électrique est munie d'une prise de mise à terre. Assurez-vous de bien relier la patte de prise avec la vis.
- Appareils destinés à plus de 150 volts - Si ces appareils offrent une prise de courant tel que démontré au croquis D, ils doivent être utilisés avec un circuit de 240 volts. Aucun adaptateur n'est disponible pour cette prise.

ADAPTEUR (Non requis au Canada)



Machine Overview

- 1 POWER ON INDICATOR LIGHT
- 2 MAIN POWER SWITCH
- 3 WORKING SPEED DIAL
- 4 120V AC PLUG-IN
- 5 TRACTION DRIVE LOCK LEVER
- 6 BRUSH/VAC SHOE RAISE/LOWER LEVER
- 7 120 VOLT AC AUXILLARY TOOL HOOKUP
- 8 SPRAY JET/AUXILLARY FLOOR TOOL HOOKUP
- 9 VACUUM SCRUB HEAD HOOKUP
- 10 BRUSH PRESSURE ADJUSTMENT KNOB
- 11 BRUSH PRESSURE GAUGE
- 12 FORWARD/REVERSE SWITCH
- 13 PUMP SWITCH, AUTOMATIC AND AUXILLARY
- 14 VACUUM SWITCH
- 15 TRACTION DRIVE CONTROL LEVERS
- 16 DUMP HOSE



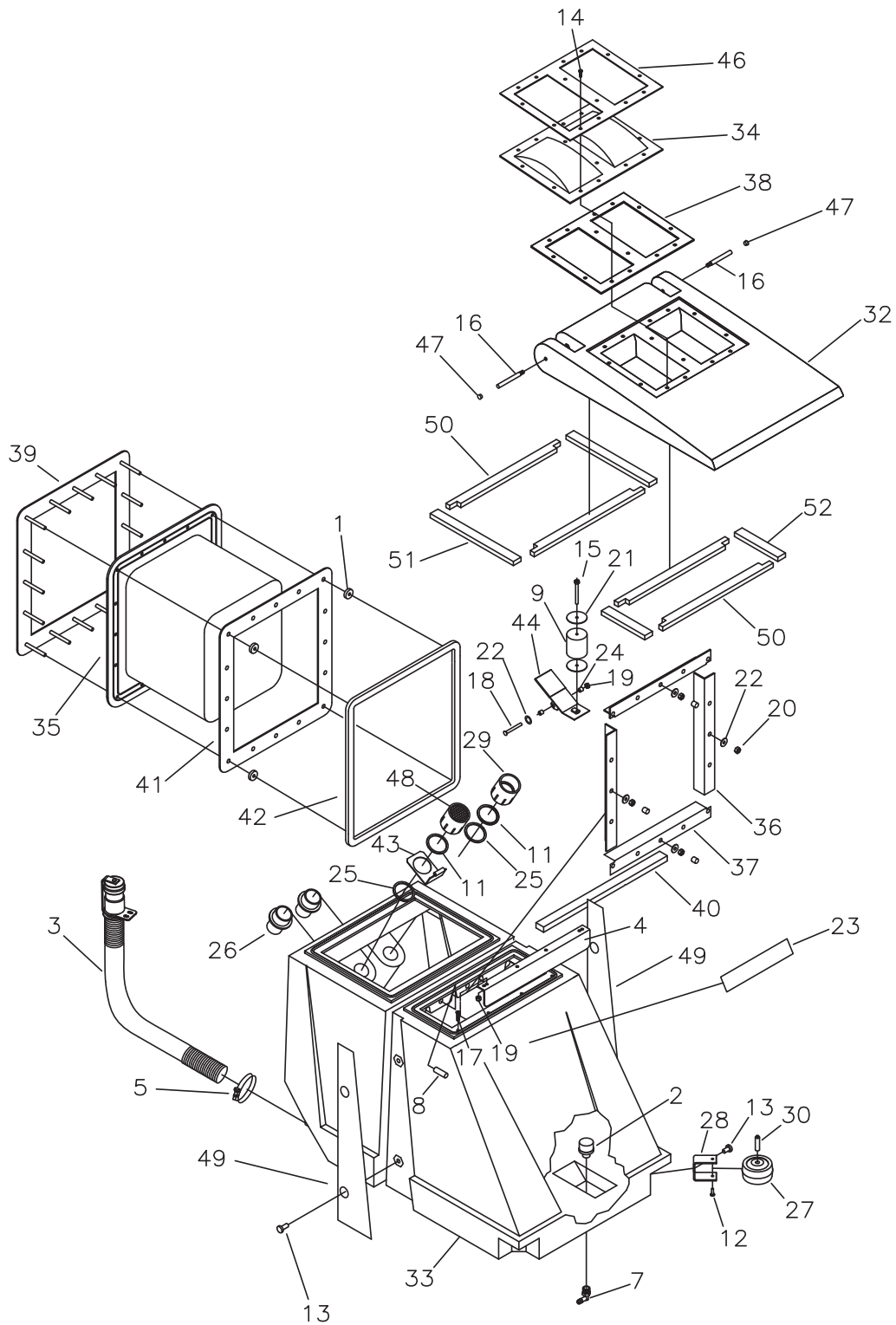
Operating Instructions

1. Filling: Fill the solution tank with the desired amount of water and add liquid cleaning solution to the proper dilution ratio. **DO NOT USE** powdered cleaning chemicals. Powders are unlikely to dissolve thoroughly, resulting in clogging the inline solution filter. This can reduce or stop water flow to the pump and spray jets.
2. Connect power supply cord to grounded wall outlet, Item # 4
3. Engage traction drive system, Item #5
4. Turn on main power switch, Item #2
5. Lower scrub head assembly, Item #6
6. Turn on pump switch to automatic, Item #12
7. Turn on vacuum, Item #13
8. Set forward/reverse switch to forward, Item #11
9. Engage traction drive control levers, Item #14
10. Adjust forward speed #3
11. Brush pressure can be adjusted + or – by knob, Item #9, and viewing gauge, Item #10 in green zone

Accessory Attachments

1. Turn master switch off
2. Disconnect vac hose, see item #8, and attach vacuum hose from remote tool.
3. Disconnect solution hose, see item #7, and install remote tool solution hose to the quick disconnect. Turn the pump solution switch, item #13, to auxiliary.
4. Turn on main power switch.
5. Turn on switch #13 to activate vacuum motor.

Exploded Views
Tank Assembly I

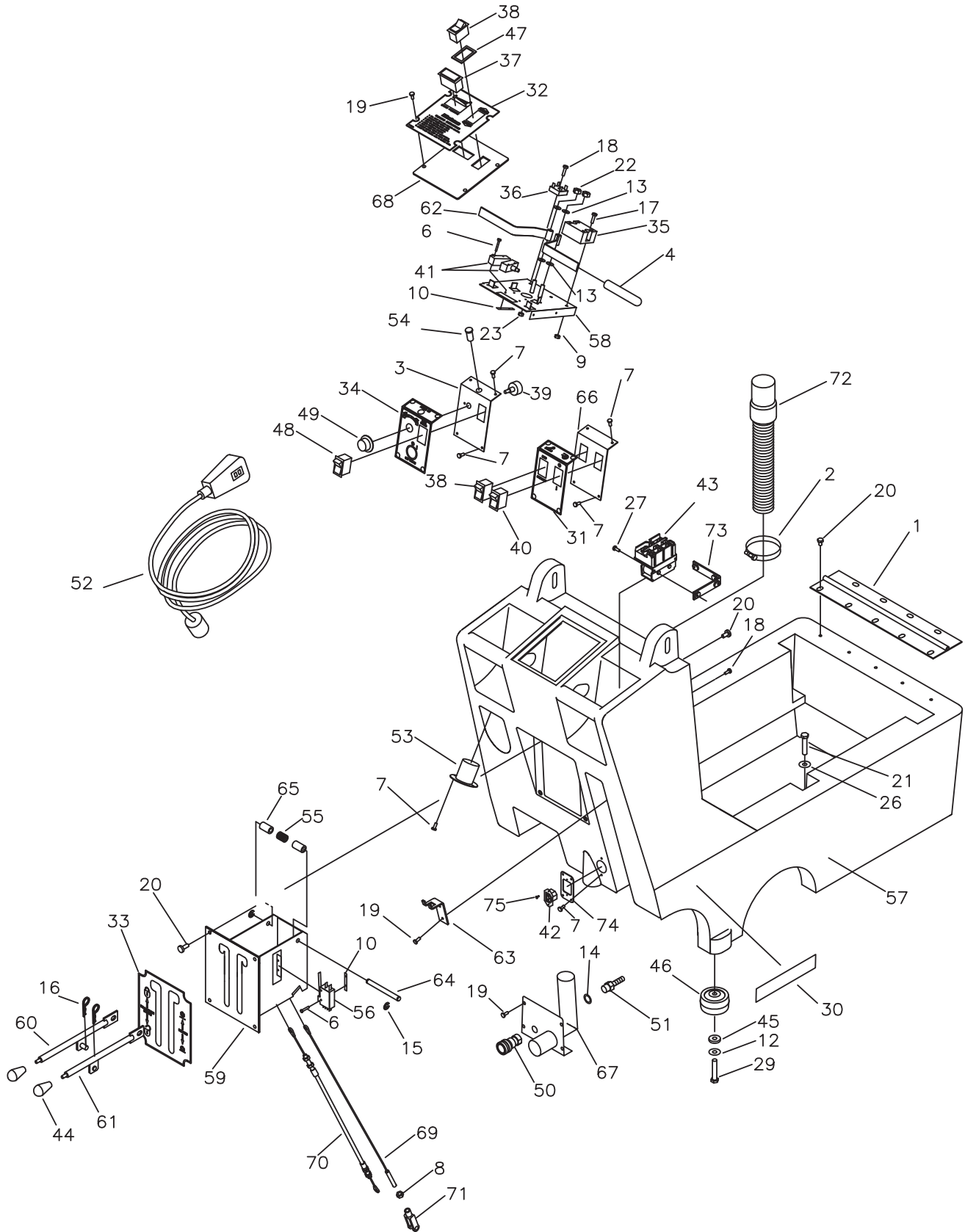


Tank Assembly 1 Bom

BILL OF MATERIAL TANK ASSEMBLY 1			
ITEM	PART NO.	QTY	DESCRIPTION
1	130029	4	GROMMET .75X.31X.25
2	130118	1	STRAINER-SOLUTION M3-40
3	260202	1	HOSE ASY 260B NEW STYLE, 1/4TURN CAP
4	260184	1	.125R 1S1B SUPPORT ANGLE 12GA SS
5	3303255	1	CLAMP - SCREW 1" to 2" DIA 301SS
7	450040	1	FTG-ELBOW 90 3/8 MPT X 3/8 HB NYLON
8	420013	1	TUBE 1/2 X 3 PE
9	430089	1	FLOAT 17B
11	450081	2	WASHER-FLAT 1.908 X 2.41 X .03 SS
12	710353	2	SCR-PHMS 10-32 X .37 ZP
13	710985	6	SCR-BHSCS 3/8-16 X .625 ZP
14	711118	14	SCR-PHSMS 10-12 X .75 SS A POINT
15	712092	1	SCR-HH 1/4-20 X 2.5 NYLON GR 6.6
16	712107	2	BLT-SHOULDER 1/4-20 X 2.87 LG
17	712563	4	SCR-FHMS 1/4-20 X 1.00 SS
18	712568	1	SCR-FHMS 1/4-20 X 2.25 SS
19	712667	5	NUT-NYLOC 1/4-20 SS
20	712683	16	NUT-NYLOC 5/16-18 SS
21	712759	2	WASHER-FLAT .31 X 1.37 X .06 SS
22	712767	26	WASHER-FLAT .406 X .75 X .035 SS
23	715840	1	DECAL-AMBASSADOR 20
24	762384	2	BUSHING-.277 X .375 X .37 SS
25	828970	2	WSR NEOP 1.87X2.4X.125
26	831812	2	FITTING ABS 1.5MPT 1.5HOSE
27	832896	2	WHEEL-GUIDE ACSII
28	832949	2	BRKT-BUMPER
29	833160	1	FTG-ADAPTER 1.50 FPT X 1.5 SLIP PVC
30	833254	2	BUMPER WHEEL AXLE
32	840001	1	LID TNK ACS 20 BURGUNDY
33	840002-1	1	SOLUTION TANK AMB 20 - BURGUNDY
34	840017	1	DOME AIR / WATER
35	840051	1	BLADDER BAG ACS 20"
36	840054	2	ANGLE, BLADDER SIDE 12GA SS
37	840055	2	ANGLE, BLDDR TOP/BOT 12G SS
38	840061	1	GASKET ACS DOME
39	840063	1	FRAME BLADDER MOUNT 12SS

BILL OF MATERIAL TANK ASSEMBLY 1			
ITEM	PART NO.	QTY	DESCRIPTION
40	840069	1	POCKET GASKET ACS
41	840070	1	WASHER PLTE ASSY 12SS
42	840071	1	GASKET SOL/REC ACS 20
43	840074	1	VALVE PIVOT BRACKET
44	840075	1	FLOAT VALVE ACS 20"
46	840087	1	COVER PLATE/DOME 16SS
47	840095	2	PLUG DOME - HEYCO .312
48	840104	1	FILTER ASY / VAC MOTOR
49	840113	2	SIDE PANEL, ACS 14GA
50	840119	4	GASKET, ACS LID F/R, PVC FOAM
51	840120	2	GASKET, ACS LID LONG, PVC FOAM
52	840121	2	GASKET, ACS LID SHORT, PVC FOAM

Tank Assembly II

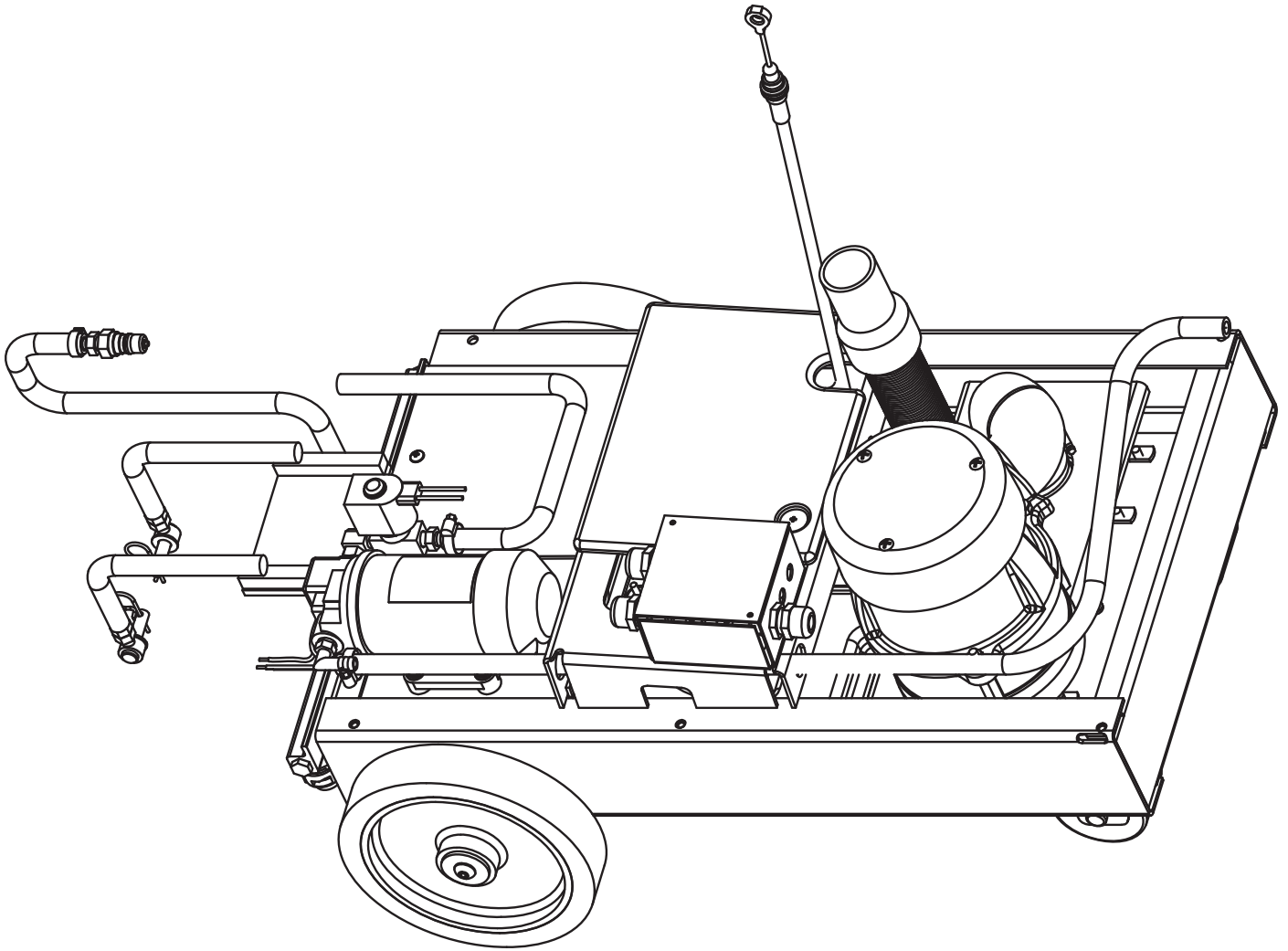


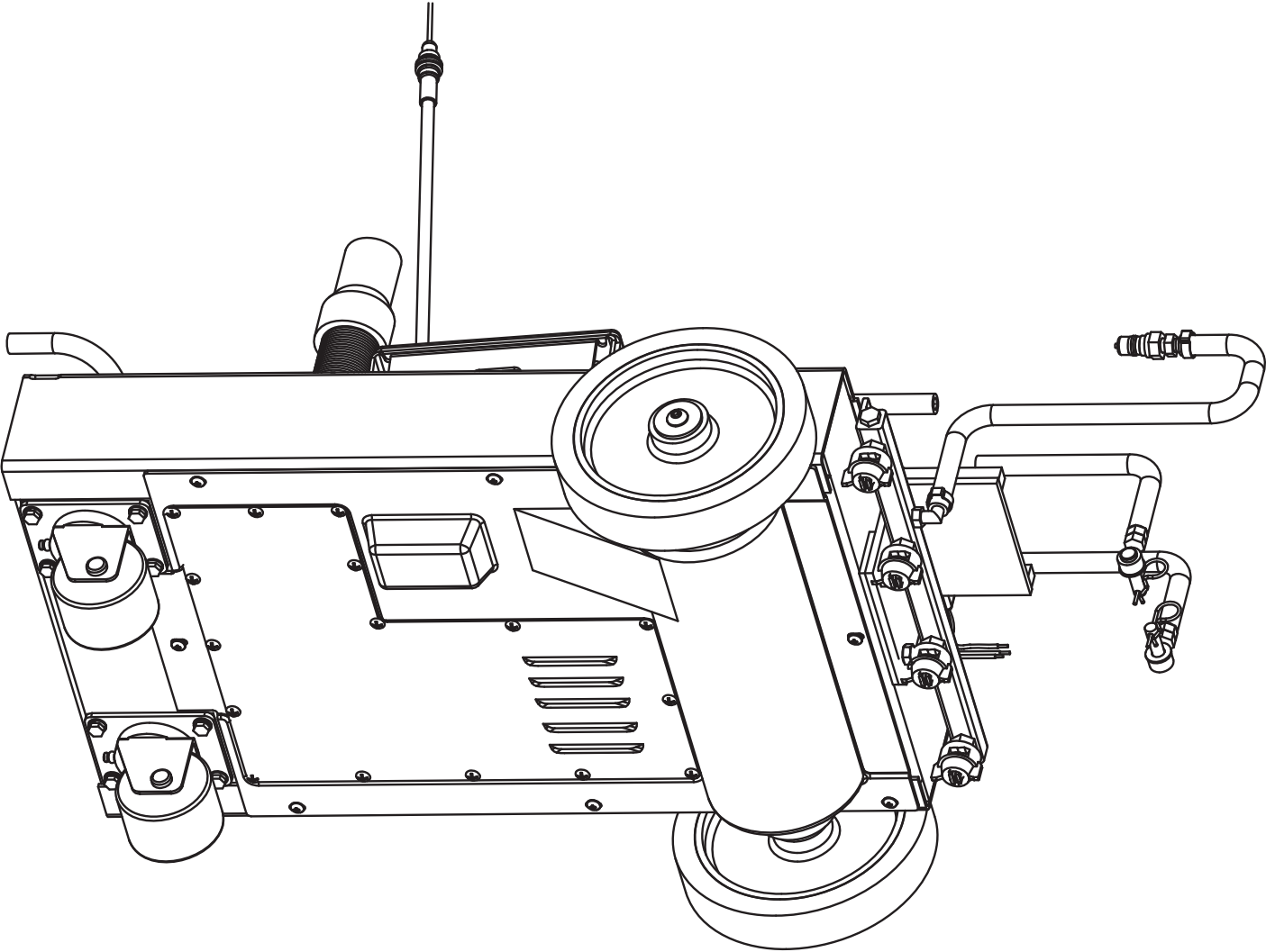
Tank Assembly II BOM

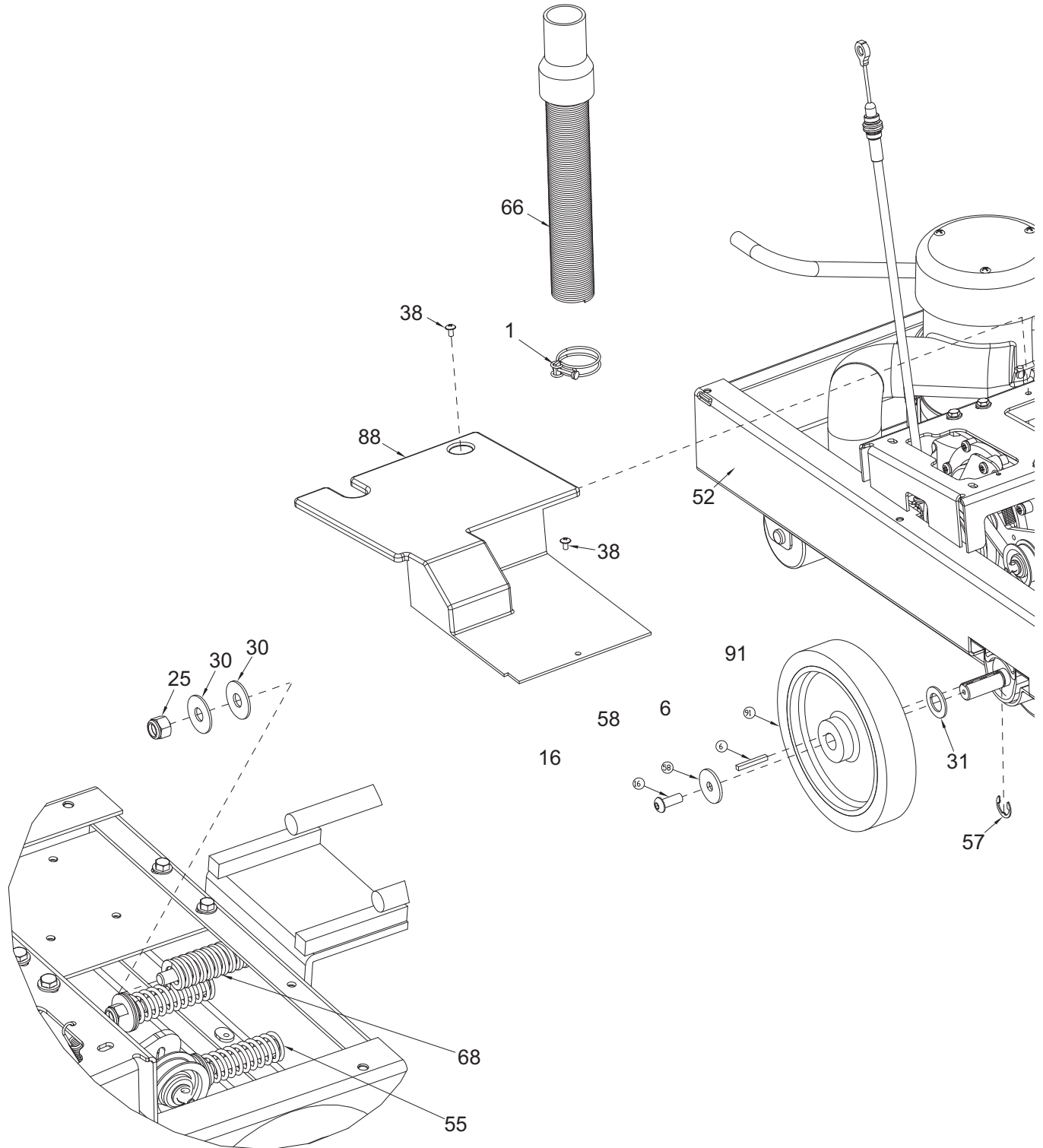
BILL OF MATERIAL - TANK ASSEMBLY II			
ITEM	PART NO.	QTY	DESCRIPTION
1	260087	1	HINGE-15"
2	3303255	1	CLAMP - SCREW 1" to 2" DIA 301SS
3	260255	1	SPEED CONTROL BRACKET 260TD
4	260291	2	GRIP-HANDLE 260TD
6	710307	6	SCR-PHMS 6-32 X 1.00 ZP
7	711160	14	SCR-HI/LO 10 X .625 BLACK ZINC
8	711322	1	NUT-HEX 5/16-24 ZP
9	711426	2	NUT-FLANGED WIZZ 8-32
10	711430	3	NUT-TINNERMAN 6-32
12	711523	2	WASHER-WAVE .37 X .68 X .08
13	711577	4	WASHER-FLAT .260 X .50 X .020
14	711578	1	WASHER-FLAT 1/2 BRASS
15	711717	2	RET RING-E EXT .37
16	711808	2	PIN-HAIRPIN COTTER #13
17	710330	2	SCR-RHMS 8-32 X .62 ZP
18	712537	8	SCR-THMS 10-24 X .75 SS
19	712540	10	SCR-THMS 10-24 X .37 SS
20	712560	13	SCR-THMS 1/4-20 X .50 SS W/NYLON PATCH
21	713005	6	SCR-HH 1/4-20 X 1.50 ZP GR 5 PART THRD
22	711373	2	NUT-NYLOC 1/4-20 ZP
23	712638	2	NUT-NYLOC 10-24 SS
26	712759	6	WASHER-FLAT .31 X 1.37 X .06 SS
27	712811	2	SCR-RHMS 10-24 X .50 ZP
29	713048	2	SCR-HH 3/8-16 X 2.50 ZP GR 5
30	715383	2	DECAL-MMAN 1 X 6.88 LT GRY
31	715621	1	DECAL-VAC/PUMP
32	715622	1	DECAL-DASHBOARD ACS 20
33	715623	1	DECAL-BRUSH/TRACK LIFT
34	715626	1	DECAL-SPEED CONTROL ACS
35	740187	1	CONTROLLER-2SP 115/230V
36	740202	2	RECTIFIER-BRIDGE 50A 600V IMP
37	740402	1	GAUGE-PRESSURE 0-3
38	740736	2	SWITCH, DPDT 3 POSITION ON-OFF-ON
39	740738	1	WIRE ASSY.
40	740801	1	SWITCH-ROCKER ON/OFF DPDT
41	740806	2	SWITCH-SNAP ACT 20A 1HP
42	741038	1	RECEPTACLE-10A 250VAC IEC 320

BILL OF MATERIAL - TANK ASSEMBLY II			
ITEM	PART NO.	QTY	DESCRIPTION
43	742145	1	RELAY-MOTOR REVERSE 120V
44	760592	2	KNOB-OVAL TAPERED
45	762295	2	BUSHING-ADJ .375 X .62 X .18 ZINC
46	762331	2	WHEEL-W/BALL BEARING 3/8" bore
47	748209	4	GASKET-FOR 2 POLE ROCKER SWITCHES
48	809755	1	SWITCH
49	809874	1	KNOB-SPEED CONTROL
50	828370	1	FTG-COUPLER 1/4 FPT BRASS
51	828952	1	FTG-ADAPTER 1/4 MPT X 3/8 HB PP
52	741205-1	1	CORD ASY, 14/3 75' GFCI-FEM LOCK PLUG
53	830540	1	RECEPTACLE-FLANGE NEMA L5-15P 15 A 125
54	832859-1	1	INDICATOR LIGHT 115V ASY
55	833102	1	SPRING-KNOB .60 X .73 X 1.75 ZINC
56	833329SA	1	SWITCH-STAGERED ACTION
57	840005-1	1	BASE TANK AMB 20
58	840013	1	PLT LEVER SWITCH 16GA
59	840014	1	LEVER CONTROL BOX
60	840022	1	LEVER BAR ASY BELT TNSN
61	840023	1	LEVER BAR ASY VAC SHOE
62	840024	2	LEVER - SWITCH
63	840027	1	HOSE CLIP
64	840039	1	LEVER PIVOT PIN
65	840040	2	BUSHING-LEVER BOX.396 X .625 X 1.082 ZC
66	840057	1	PLATE, SWITCH
67	840079-1	1	AUXILIARY PLATE ASSY, AMB 20
68	840080	1	DASH PANEL 16GA 16
69	840091	1	CABLE-LIFT ACS
70	840092	1	CABLE-TENSION ACS
71	840093	1	YOKE ACS
72	840097	1	HOSE GRAY WATER
73	840108	1	BRKT-RELAY
74	840122	1	PLATE, RECEPTACLE - MIDGET TWIST LOCK
75	829214	4	RIVET-POP 1/8 REFERENCE # AB4-3
76	829851	1	FLGD TWST LOC FM MIDGET

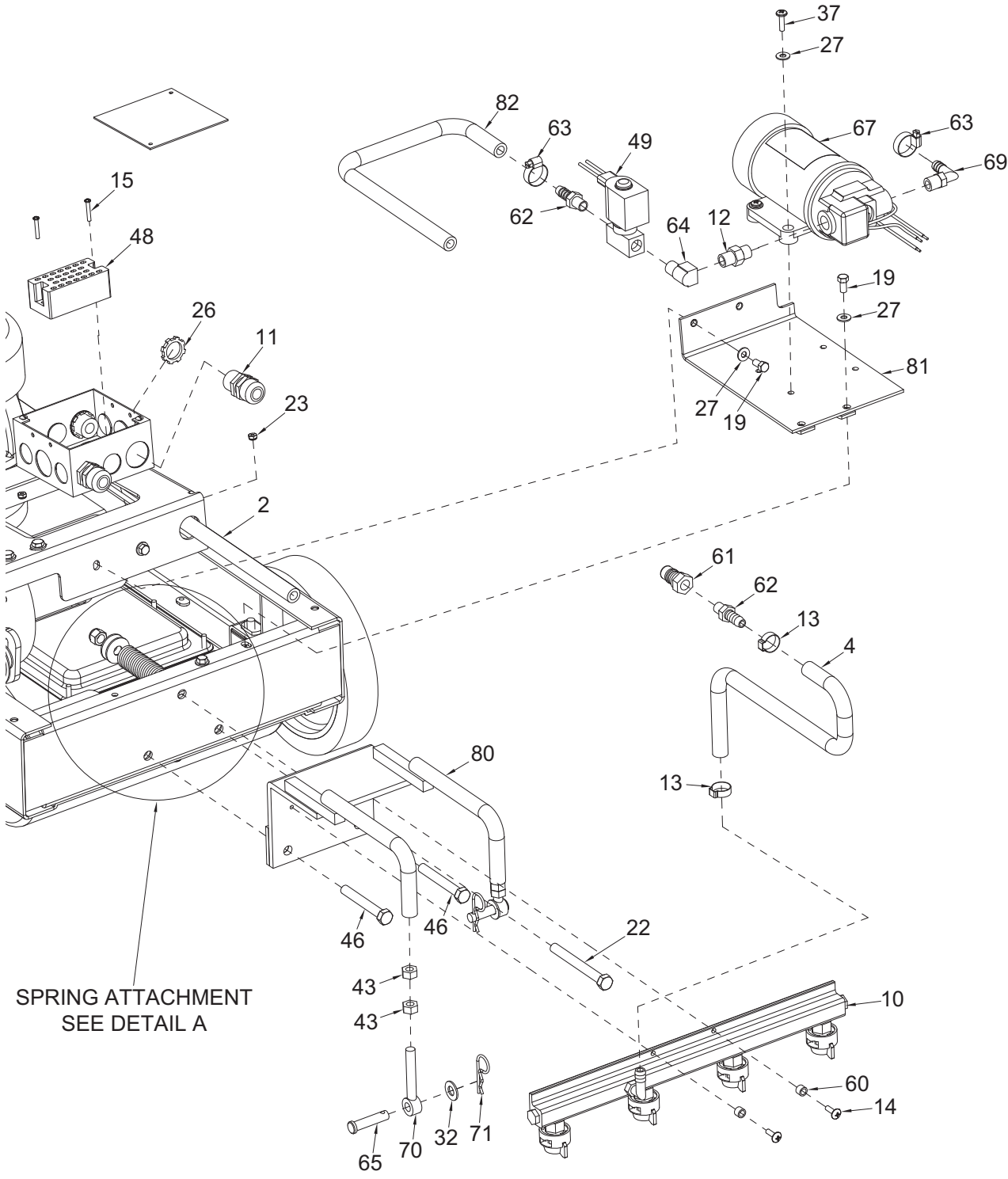
Base Assembly

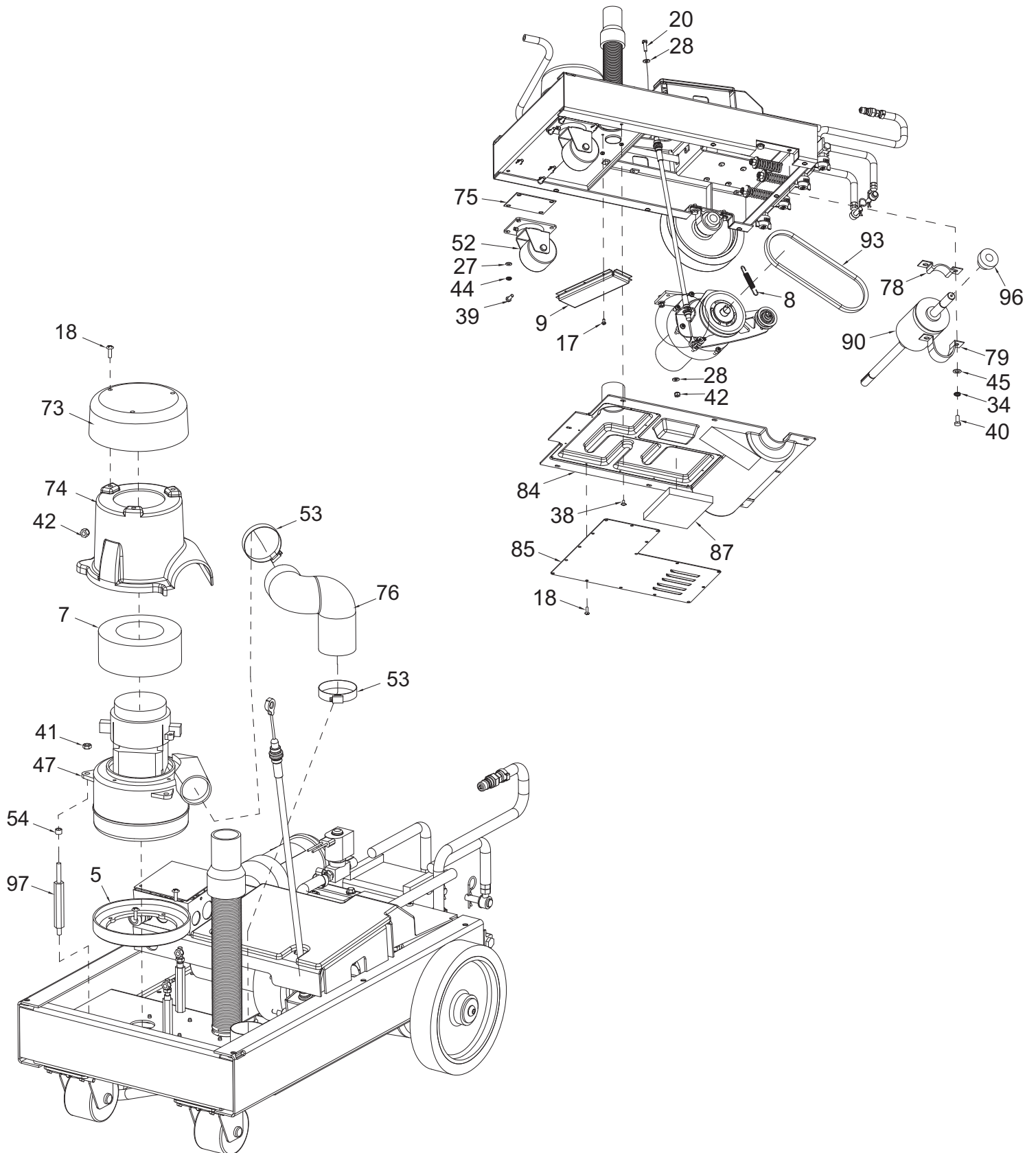


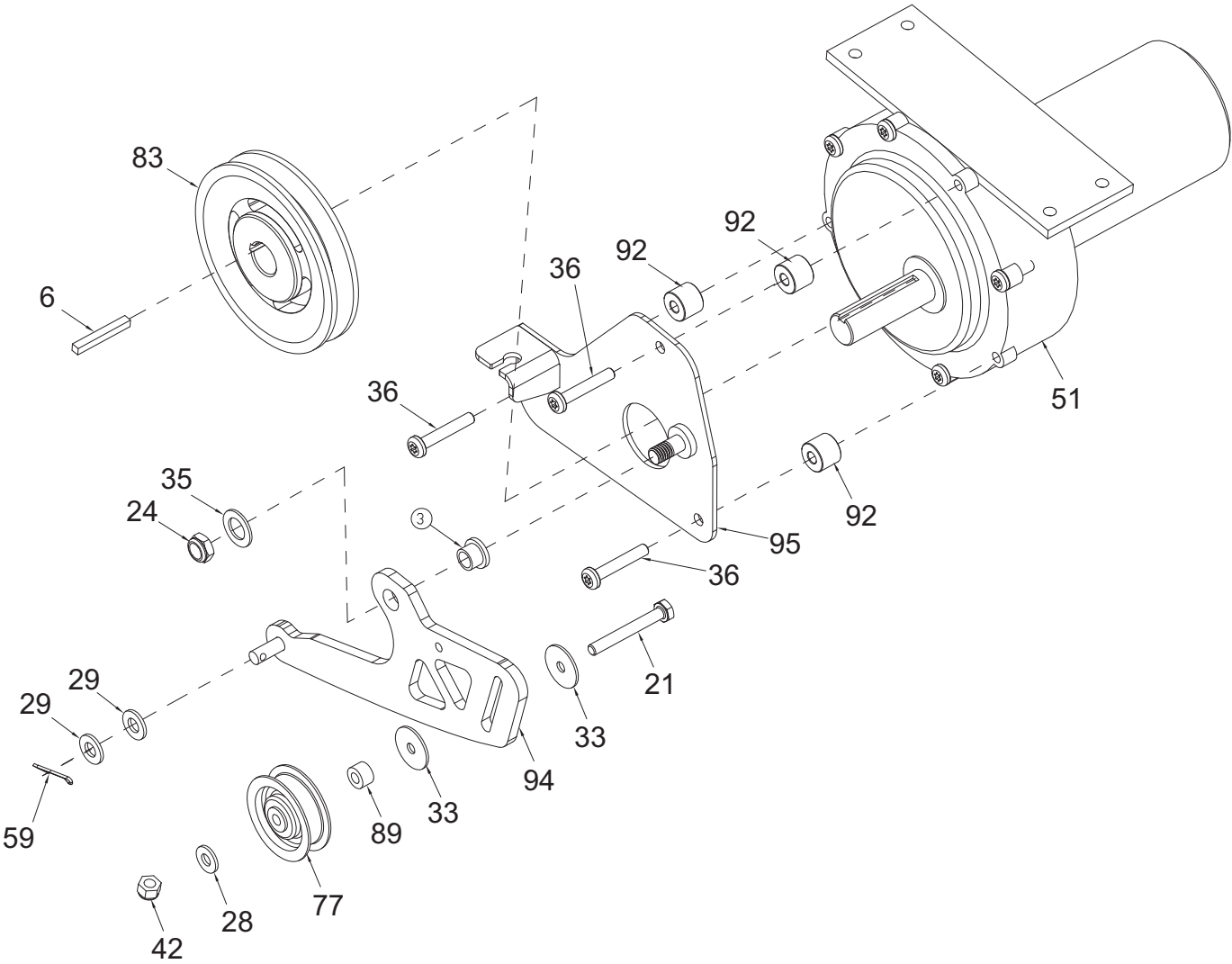




DETAIL A







Base Assembly BOM

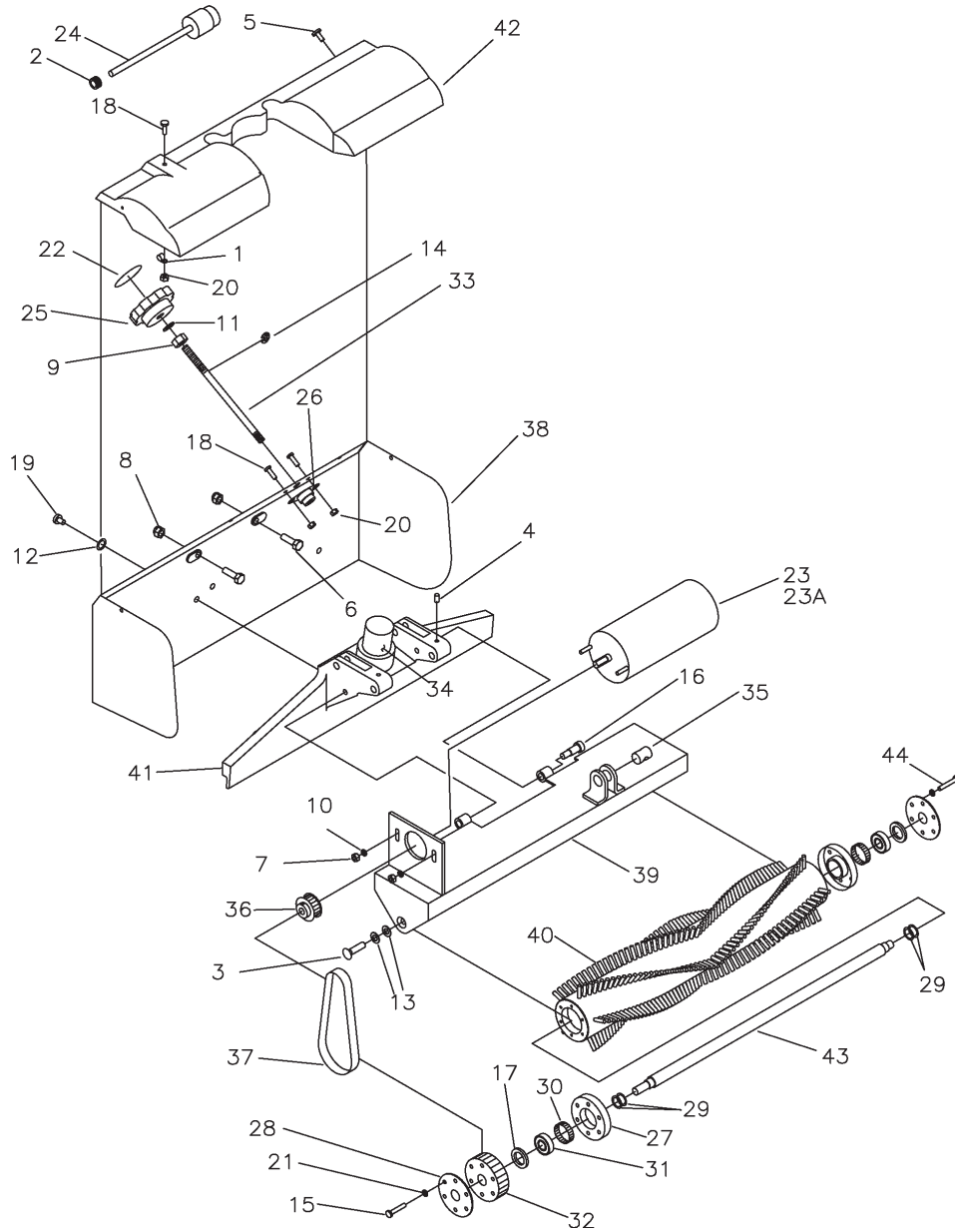
BILL OF MATERIAL - BASE ASSEMBLY			
ITEM	PART NO.	QTY	DESCRIPTION
1	241096	1	HOSE 3/8 X 45" WIRE REINFORCED SCV 24/26
2	260066	1	BUSHING-FLG .377 X .50 X .31 OILITE
3	260182	1	HOSE-WIRE REINF 3/8 X 18"
4	3303255	1	CLAMP - SCREW 1" to 2" DIA 301SS
5	290017	1	MOLDED VAC MOTOR GASKET
6	361233	3	KEY-SQ 3/16 X 1-1/2
7	380064	1	RING, FOAM
8	430051	1	SPRING-RETURN .313 X .438 X 2.93 SS
9	450004	1	AIR MANIFOLD (452005)
10	450023	1	SPRAYBAR ASSEMBLY
11	450050	3	BUSH CORD GRIP/LIQUID TIGHT HEYCO .875
12	450059	1	FITTING BRASS 1/4MPT 1/4MPT
13	450076	2	CLAMP - 1 EAR .748 DIA 304SS
14	710154	2	SCR-THMS 10-32 X .625 SS
15	710207	2	SCR-PHMS 6-32 X .87 ZP
16	710986	2	SCR-BHSCS 3/8-16 X 1.00 ZP
17	711124	6	SCR-PHMS 10 X .37 ZP B POINT
18	711160	19	SCR-HI/LO 10 X .625 BLACK ZINC
19	711202	4	SCR-HH 1/4-20 X .50 ZP
20	711206	4	SCR-HH 1/4-20 X .87 ZP GR 5
21	711214	1	SCR-HH 1/4-20 X 2.00 ZP GR 5
22	711280	1	SCR-HH 3/8-16 X 3.50 ZP GR 5
23	711371	2	NUT-NYLOC 6-32 ZP
24	711375	1	NUT-NYLOC 3/8-16 ZP
25	711380	3	NUT-NYLOC 3/8-16 ZP
26	711400	3	NUT-LOCK 1/2 ELECTRICAL NUT
27	711504	16	WASHER-FLAT 1/4 SS
28	711505	9	WASHER-FLAT 1/4 ZP
29	711506	2	WASHER-FLAT 5/16 X .688 ZP
30	711507	6	WASHER-FLAT 3/8 X 1.12 X .06
31	711512	2	WASHER-FLAT 3/4 X 1.37 X .08 ZP
32	711515	2	WASHER-FLAT 3/8 X .812 X .0625 ZP
33	711519	2	WASHER-FLAT 1/4 X 1.00 X .06 ZP
34	711545	4	WASHER-LOCK 5/16 SPLIT ZP
35	712310	1	WASHER-FLAT .52 X .87 X .06 ZP

BILL OF MATERIAL - BASE ASSEMBLY			
ITEM	PART NO.	QTY	DESCRIPTION
36	712345	3	SCREW-TORX PAN HD T30 1/4-20 X 1.50 ZP
37	712537	4	SCR-THMS 10-24 X .75 SS
38	712540	10	SCR-THMS 10-24 X .37 SS
39	712562	8	SCR-HH 1/4-20 X .75, 18-8 SS
40	712575	4	SCR-HH 5/16-18 X .75 18-8 SS
41	712665	3	NUT-HEX 1/4-20 SS
42	712667	8	NUT-NYLOC 1/4-20 SS
43	712695	4	NUT-HEX 3/8-16 SS
44	712758	8	WASHER-LOCK 1/4 SPLIT SS
45	712767	4	WASHER-FLAT .406 X .75 X .035 SS
46	713049	2	SCR-HH 3/8-16 X 2.75 GR 5, ZP
47	740089	1	MOTOR-VAC 120V
48	740189	1	TERMINAL BLOCK-10471
49	740492	1	VALVE-WATER SKINNER 115V
50	740747	1	16G WHITE 4.00" B= 9
51	740872	1	MOTOR - GEAR, AMB 20, 140V DC
52	760251	2	CASTER-3" X 2
53	760859	2	CLAMP - SCREW 1.75" to 2.75" DIA 201SS
54	762073	3	BUSHING-.259 X .375 X .265
55	762422	2	SPRING, COMPRESSION
56	805634	1	COVER BOX (741012)
57	809148	2	RET RING-E TYPE .75
58	809226	2	WSR-FLT .40 X 1.50 X .12
59	809311	1	PIN-COTTER 7/64 X 1
60	809880	2	BUSHING
61	828368	1	MALE COUPLER, 1/4" FPT BH2-61
62	828952	2	FTG-ADAPTER 1/4 MPT X 3/8 HB PP
63	829129	2	CLAMP - SCREW .313" to .875" DIA 301SS
64	831306	1	FTG-ELBOW 90 ST 1/4 MPT X 1/4 FPT BRASS
65	831965	2	PIN-CLEVIS 3/8 X 1.63
66	832790	1	HOSE-VAC TANK
67	833067	1	PUMP-100PSI 115V
68	833302	1	SPRING-DIE
69	833325	1	FTG-ELBOW 90 1/4 MPT X 3/8 HB NYLON
70	833341-1	2	BLT-EYE 3/8-16 X 2.62

BILL OF MATERIAL - BASE ASSEMBLY			
ITEM	PART NO.	QTY	DESCRIPTION
71	833374	2	PIN-HAIRPIN COTTER 3/8
72	840006-1	1	AMB 20 FRAME WELDMENT
73	840011	1	VAC MOTOR COVER TOP
74	840012	1	VAC MOTOR COVER BOTTOM
75	840018	2	WASHER PLATE
76	840042	1	HOSE VAC MOTOR OUTPUT
77	840044	1	PULLEY, IDLER
78	840049	2	STAMPED STL PILLOW BLK
80	840060	1	BRUSH MOUNT ASSEMBLY
81	840064-1	1	BRACKET, PUMP AMB 20
82	840082	1	HOSE-WIRE REINF 3/8 X 24"
83	840088	1	PULLEY ACS DRIVE
84	840089	1	BAFFLE EXHAUST ACS
85	840090	1	COVER EXHAUST BAFFLE ACS
86	840092	1	CABLE-TENSION ACS
87	840096	1	FILTER EXHST BAFFLE ACS
88	840105	1	COVER-DRIVE MOTOR
89	840114	1	SPACER,.500 X .250 X .312
90	840115	1	DIFFERENTIAL, ACS KEYED
91	210141	2	WHEEL-8 X 1.5 X .75 BORE
92	840141	3	SPACER-STEEL, .688 OD X .265 ID, ZINC PL
93	840144	1	DRV BELT-AMB 20 NEW DESIGN 1/2" X 27"
94	840151	1	TENSION ARM WELDMENT - AMB 20
95	840153	1	TENSION PLATE WELDMENT - AMB 20
96	881059	2	BEARING-COLLAR .75 (2PC)
97	833265PLT	3	THREADED SPACER PLT ZINC

THIS PAGE
INTENTIONALLY
LEFT BLANK

Brush Assembly



Brush Assembly BOM

BILL OF MATERIAL - Brush Assembly			
ITEM	PART NO.	QTY	DESCRIPTION
1	670669	1	CLIP-P 3/8 ID, #10 MOUNT, PLASTIC
2	700287	1	GROMMET
3	710923	2	SCR-FHSCS SOC 5/16-18 X .62 ZP
4	711018	2	SCR-SET 10-32 X .37 BLK OX CP
5	711160	5	SCR-HI/LO 10 X .625 BLACK ZINC
6	711232	2	SCR-HH 5/16-18 X 1.50 ZP GR 5 FULL THREA

BILL OF MATERIAL - Brush Assembly			
ITEM	PART NO.	QTY	DESCRIPTION
7	711350	2	NUT-NYLOC 10-32 ZP
8	711353	2	NUT-ACORN 5/16-18 NICKEL
9	711391	1	NUT-JAM 3/8-16 ZP
10	711504	2	WASHER-FLAT 1/4 SS
11	711539	1	WASHER-EXT LOCK 3/8 ZP
12	711554	11	WASHER-INT TOOTH LOCK 1/4 ZP
13	711558	2	WASHER-INT LOCK 5/16
14	711717	1	RET RING-E EXT .37
15	712066	12	SCR-PHSMS 10 X 1.25 ZP A-B POINT
16	712081	2	BLT-SHOULDER 3/8 X .75 X 5/16-18 SS
17	712318	2	WASHER-FLAT 3/4 X 1.12 X .12 ZP
18	712536	3	SCR-THMS 10-24 X .62 SS
19	712560	11	SCR-THMS 1/4-20 X .50 SS W/NYLON PATCH
20	712638	3	NUT-NYLOC 10-24 SS
21	712757	12	WASHER-LOCK #10 SPLIT SS
22	715090	1	DECAL-BRUSH PRESSURE ACS
23	740740	1	MOTOR BRUSH ACS 120VDC
24	740739	1	CORD ASSY-16GA-3 17IN MED GREY
25	760034	1	KNOB-ADJ 3/8-16 THREAD
26	760035	1	BEARING-FLG MOUNTED
27	827894	2	CUP BEARING
28	827896	2	COVER BEARING
29	827903	4	WASHER-WAVE .5 X .75
30	828145	2	RET RING, SHIM 1.25
31	828588	2	BEARING-.500 X 1.125 X .312
32	832903	1	BR PULLEY 3-40GR 5MM
33	833281	1	THREADED ROD ADJ SS
34	833326	1	VAC TUBE
35	833342	1	SHAFT PIVOT SS
36	833357	1	PULLEY MTR 20TOOTH 5MM
37	833376	1	BELT
38	840007-1	1	VAC SHOE PLATE - AMB 20
39	840019	1	BRKT-BRUSH ACS 20
40	840052	1	BRUSH-ACS 20"
41	840062-1	1	VAC SHOE - CASTING (MACHINED)
42	840065	1	COVER-BRUSH SPLASH
43	840081	1	AXLE ACS 20"
44	711106	6	SCR-PHSMS 10 X .75 ZP A POINT

Troubleshooting Guide

Use this guide to pinpoint problem areas that may arise with the use of your Ambassador 20.
CAUTION! Unplug supply cord before servicing machine components.

Solution System

I. No water dispensed from spray jets

- A. The hose connection at the pump for the spray tube may not be tight. Disconnect, then reconnect the fitting, to ensure the fittings snap together securely.
- B. The solution pump diaphragm may be damaged. Inspect by removing the diaphragm from the pump and inspect the diaphragm for cracks. Replace if required.

II. Spray intermittent or streaked

- A. Solution hoses may be clogged. Replaced kinked hoses if found.
- B. The filter strainer in the solution tank may be clogged. Clean the strainer thoroughly.
- C. The spray jets may be clogged. Remove the end plug from the spray tube and flush by turning the pump on. Remove the spray jets from the tube and clean as required. Do not clean out the hole in the jet with a pin or wire. This may cause permanent streaking.

Solution Recovery

I. Solution recovery is reduced.

- A. Vacuum filter maybe clogged. First check filter recovery tank. Clean if required.
- B. Check the vacuum hoses for secure fit over the vacuum fittings. Tighten clamps where used. Also check hoses for cracks, kinks or clogging.
- C. Check the seals on the tank covers for damage. Replace if needed. Make sure cover closes freely without restrictions.
- D. Make sure the drain hose on the back of the tank is sealed.
- E. Check the vacuum slot on the scrub head for clogging. Clean out the slot if required.
- F. Vacuum motor brushes could be worn. Inspect and replace. If motor has run through two sets of brushes, replace the motor.

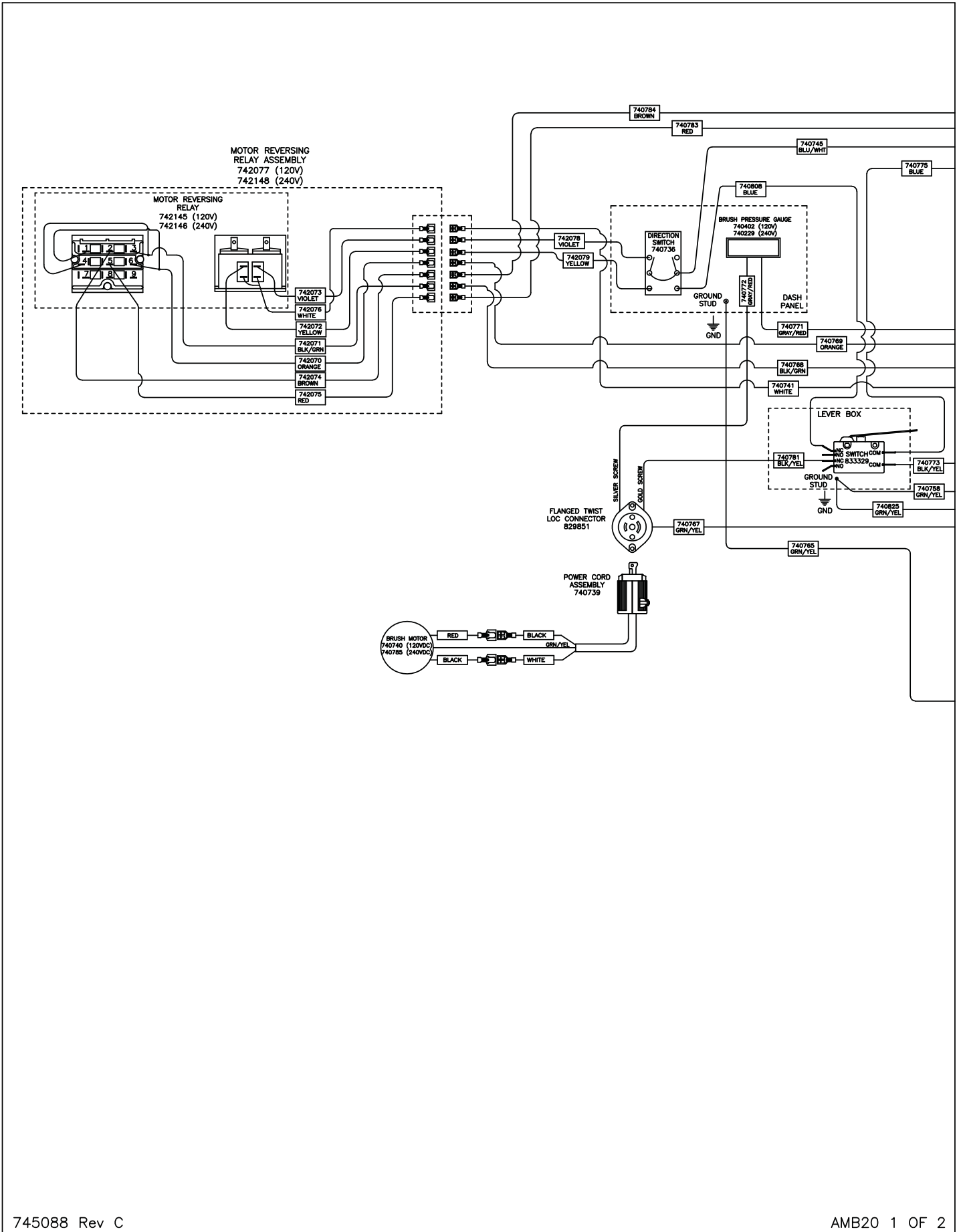
Electrical System A.C.

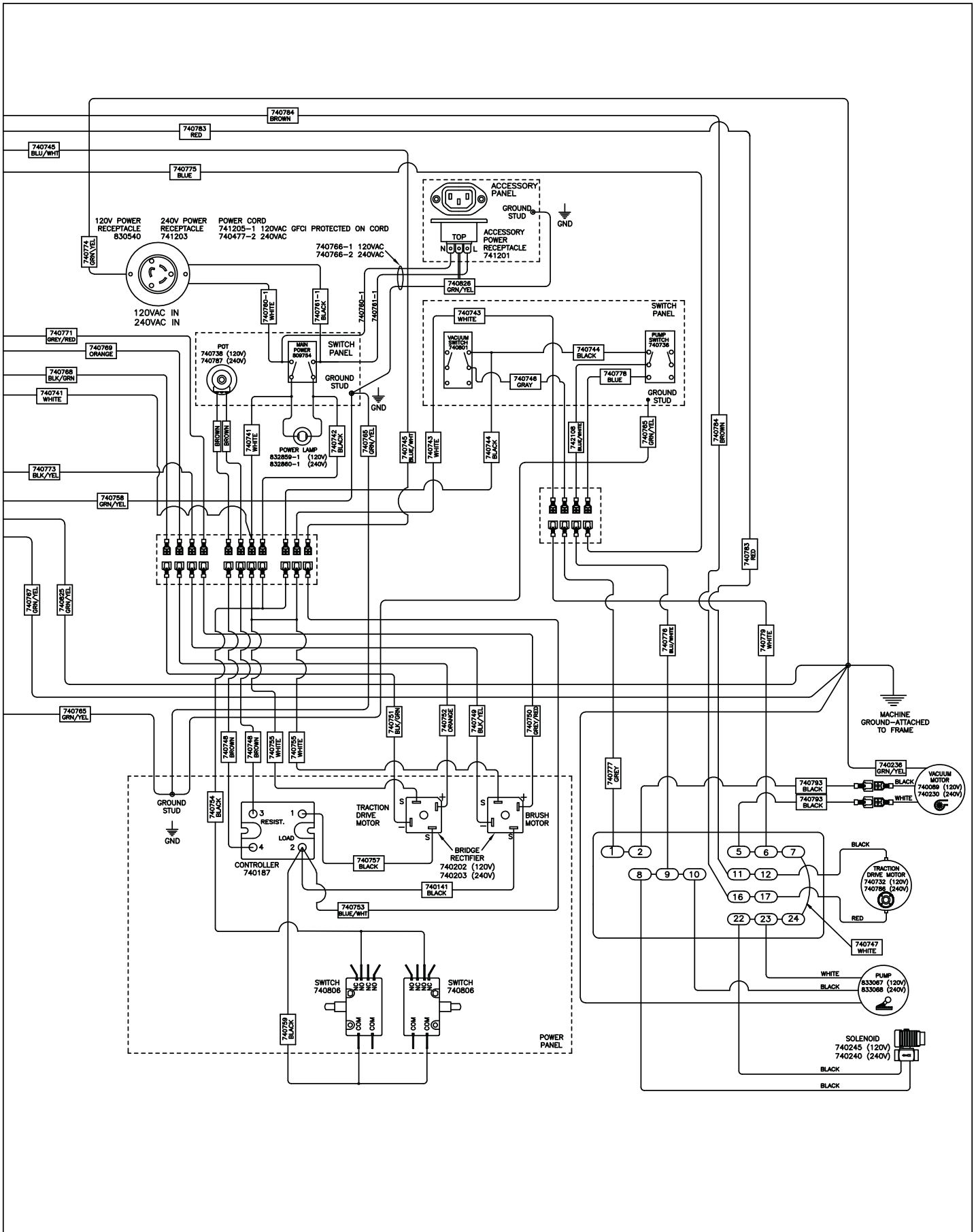
Solution Recovery (cont'd)

- II. Pump motor does not run.
 - A. Check pressure switch for short circuit. By-pass the pressure switch by connecting the two black leads to the switch to one another, if the motor then runs, replace the pressure switch.
- III. Machine fails to run when handle switch is activated.
 - A. Speed control maybe shorted out.
 - B. Speed control potentiometer may be defective.
- I. Vacuum motor does not start.
 - A. Inspect the micro switch lever inside the electrical enclosure to make sure it is functioning properly. As the scrub head is lowered the lever should activate the switch. Bend the switch lever to adjust function if required.
 - B. Check motor carbon brush.
 - C. Check plugs on power cord.

FOR ALL THE ABOVE MAKE SURE ALL THE ELECTRICAL CONNECTIONS ARE SECURE. MAKE SURE THE CORD TO THE WALL OUTLET IS SECURE. MAKE SURE THE GFCI IS NOT TRIPPED IF THE UNIT IS EQUIPPED WITH ONE (LOCATED ON POWER CORD).

Wiring Diagram





“More Than Just Clean”

**Minuteman is a Full Line Manufacturer of Sweepers and Scrubbers,
for Industrial Facilities.**