



**Parts and Instruction Manual  
705 Air Operated  
6 Gallon Vacuum**

## Technical Specifications

<b>Model</b>	<b>C70506-01</b>
Tank Size	6 gal.
Tank Type	Stainless Steel
Wet Capacity	3.5 gal
Dry Capacity	.46 cu ft
Filtration	.3 micron @ 94.5% efficiency
Static Lift (Max)	180"
Air Flow	166 CFM
Air Line Diameter	1/2" ID
Max. Airline Pressure	100 PSI Max
Input Air Requirement	37 CFM
Venturi	Single Jet
Hose Connection	Coupler
Weight	27 lbs

## Table of Contents

<b>TECHNICAL SPECIFICATIONS</b> .....	<b>2</b>
<b>OPERATING INSTRUCTIONS</b> .....	<b>4</b>
INSPECTION .....	4
SPECIAL WARNING .....	4
AIR PRESSURE AND C.F.M. VOLUME REQUIRED .....	4
MAINTENANCE AND USAGE .....	4
<b>ASSEMBLY INSTRUCTIONS</b> .....	<b>5</b>
FOR DRY RECOVERY .....	5
FOR WET RECOVERY .....	5
<b>CLEANING AND EMPTYING INSTRUCTIONS</b> .....	<b>5</b>
<b>OVERVIEW</b> .....	<b>7</b>
<b>EXPLODED VIEWS</b> .....	<b>8</b>
LID ASSEMBLY .....	8
TANK ASSEMBLY .....	10
<b>NOTES</b> .....	<b>12</b>
<b>WARRANTY</b> .....	<b>14</b>

## MODEL C70506 AIR OPERATED VACUUM. WET/DRY RECOVERY

### OPERATING INSTRUCTIONS

#### INSPECTION

Carefully unpack and inspect your machine for shipping damage. Each unit is tested and thoroughly inspected before shipment, therefore, any damage is the responsibility of the delivering carrier who should be notified. Read all instructions carefully before operating.

#### SPECIAL WARNING

Air operated equipment can generate static electricity during use. Static dissipating arcing can be generated and occur if equipment and accessories are not grounded. Risk of explosion is possible if operated near explosive materials or vapors. Do not operate this equipment near flammable materials such as solvents, thinners, fuels, grain dust, etc.

#### AIR PRESSURE AND C.F.M. VOLUME REQUIRED

For maximum performance, operate with 1/2" air pressure line, 80 PSI (max, 100 PSI) and 37 input C.F.M. Air pressure control valve can be regulated to operate with lower pressure and C.F.M. when maximum is not required.

#### MAINTENANCE AND USAGE

Air supplied to vacuum must be clean and dry to avoid contamination, and to maintain optimum performance.

Empty tank, clean filter bag, and replace disposable filters regularly. Clogged filters restrict air flow , and results in reduced vacuum performance.

Always shut off main air supply, and open air valve at vacuum, to relieve pressure before disconnecting air pressure line.

## ASSEMBLY INSTRUCTIONS FOR DRY RECOVERY

1. Place the filter bag assembly #2 onto tank assembly #4.
2. Place lid assembly #1 onto tank and fasten lid latches.
3. Connect 1/2" air pressure line to shut off valve on lid.
4. Attach vacuum hose assembly to intake, vacuum intake will accept 1 1/2" and/or 2" hose. OPTION: For fine dust recovery, a filter bag protector #3 is recommended to be installed ahead of the filter bag assembly #2.  
(*Must be ordered as separate item 23761177PKG of 10.*)
5. To operate, open air shut off valve to desired setting.

## ASSEMBLY INSTRUCTIONS FOR WET RECOVERY

For wet recovery, remove filter bag #2 and filter protector #3 if used. Ball float within float cage will actuate at 3 1/2 gallon recovery level.

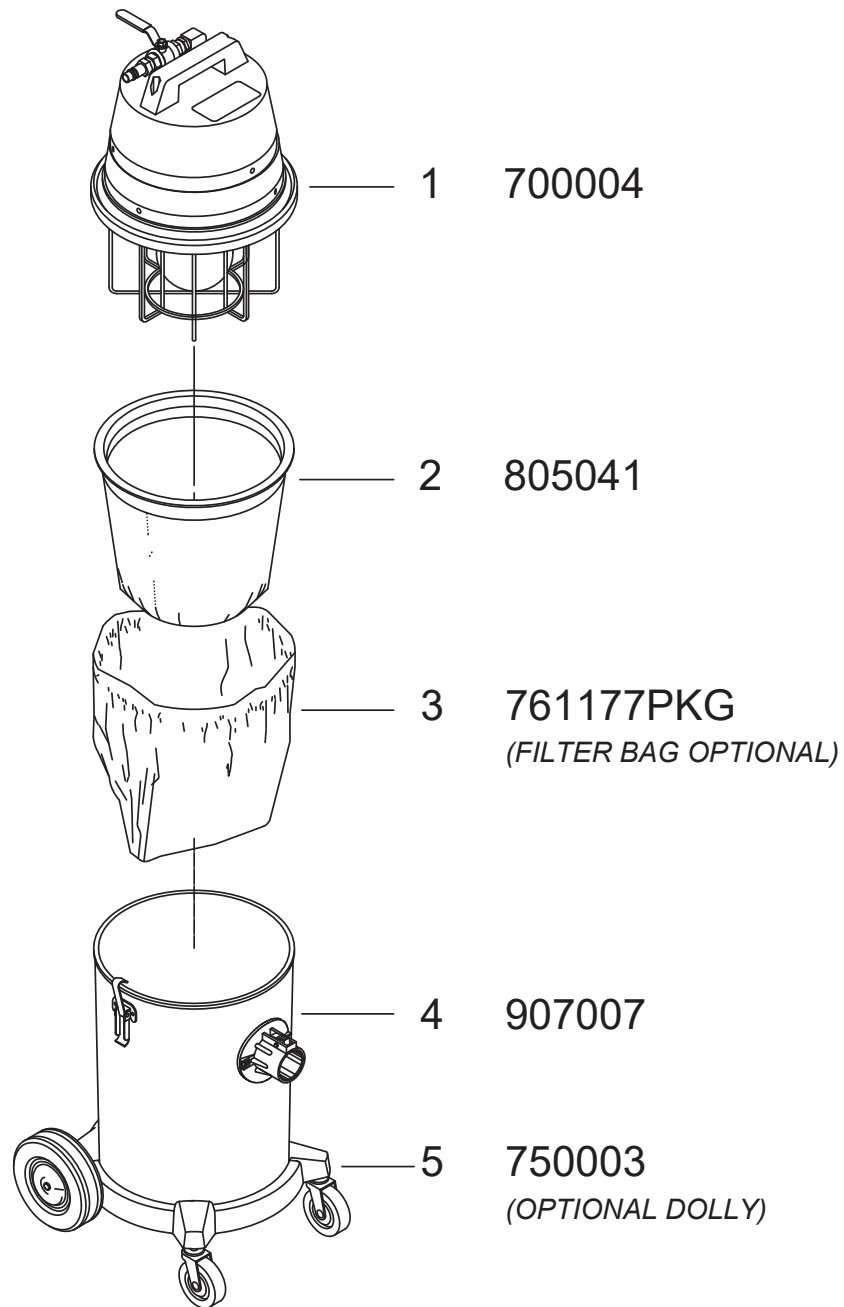
Always empty and dry tank assembly at end of each operating day, or when vacuum will not be in use over an extended period of time.

## CLEANING AND EMPTYING INSTRUCTIONS

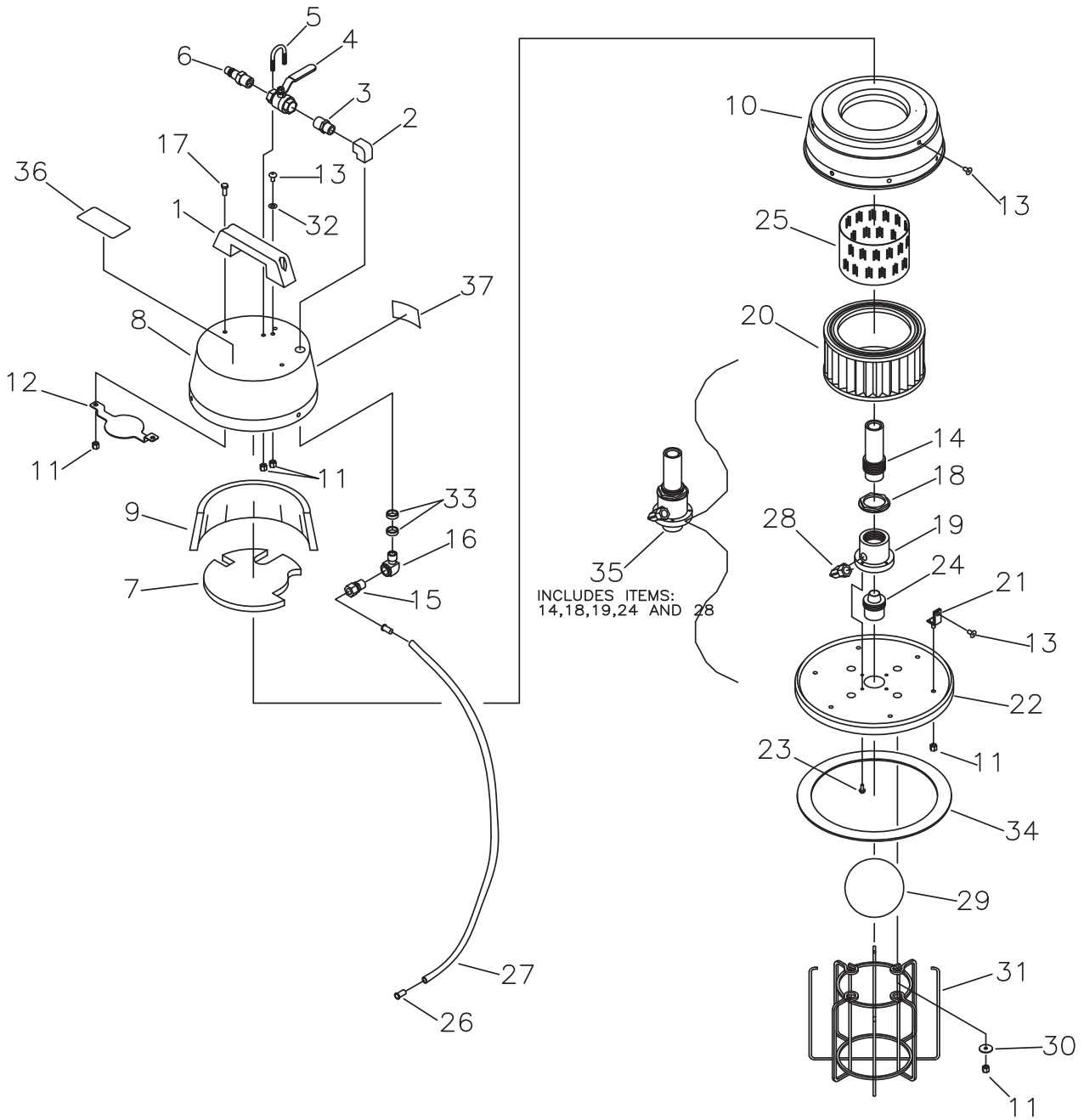
1. Shut off air supply at lid assembly.
2. Loosen lid latches and remove lid assembly.
3. Remove cloth filter bag assembly.
4. When filter bag protector is used, remove protector.
5. Empty tank into suitable trash container.
6. Reassemble following above procedure.



# OVERVIEW



**LID ASSEMBLY**

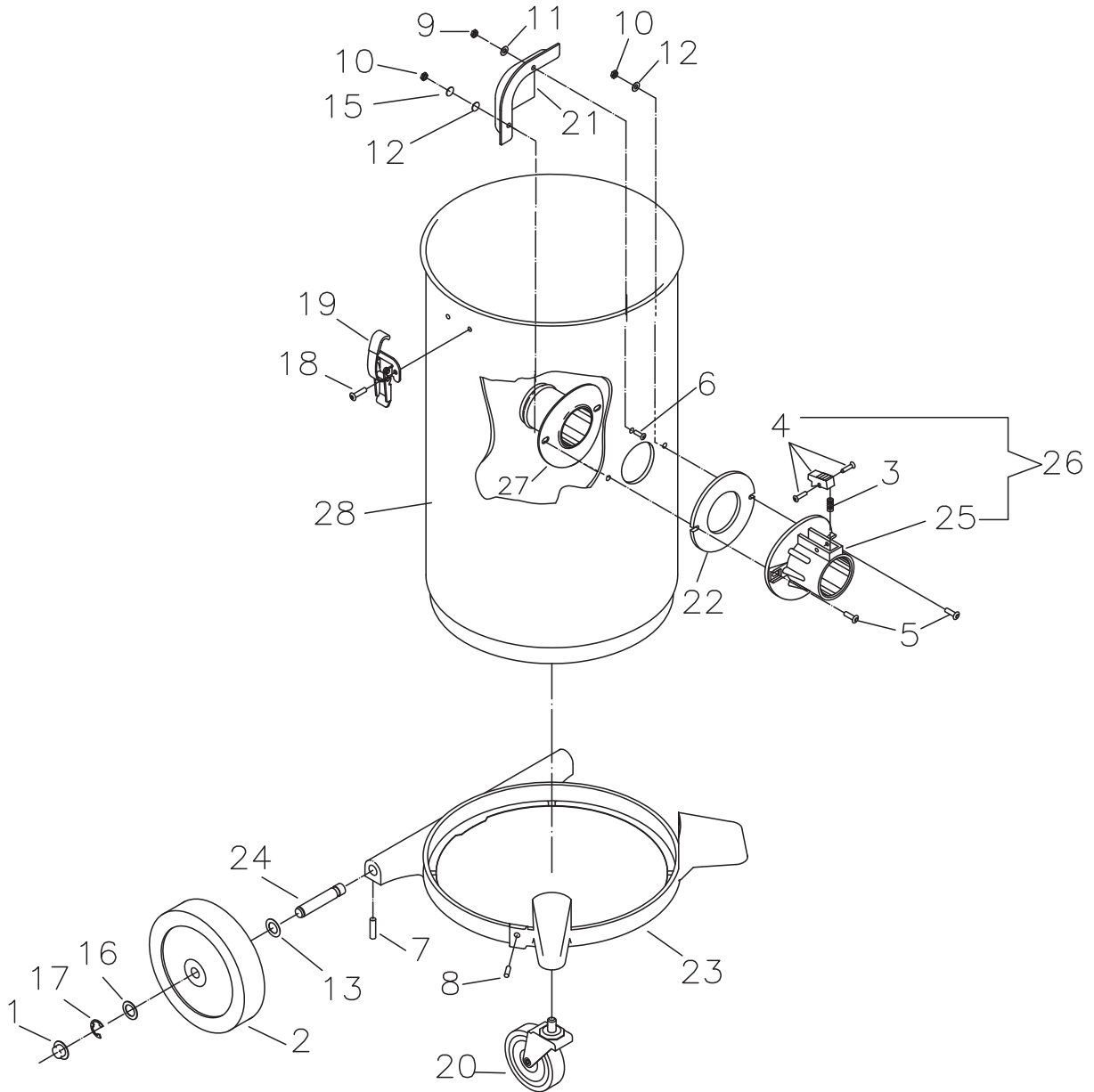




## LID ASSEMBLY BOM

BILL OF MATERIAL - 700004			
ITEM	PART NO.	QTY	DESCRIPTION
1	460001	1	HAND LE BASIC 460 BLACK
2	700028	1	FTG-ELBOW 90 ST 3/8 FPT X 3/8 FPT BRASS
3	420017	1	FITTING-NIPPLE HEX REDUCER 112RFE
4	712105	1	NLA---BLT-U 1/4-20
5	701009	1	VALVE-.50
6	701010	1	COUPLER-MALE .50
7	700033	1	DOME FELT
8	700031PTD	1	TOP COVER PTD
9	700032	1	FELT LINER
10	700030PTD	1	FILTER COVER PTD
11	712667	15	NUT-NYLOC 1/4-20 SS
12	700034	1	NLA---AIR DEFLECTOR 18GA
13	710178	10	SCR-THMS 1/4-20 X .50 ZP
14	700012	1	VENTURI EXHAUST TUBE
15	420008	1	FTG-COMPRESSION 1/2 OD X 3/8 MPT
16	830062	1	FTG-ELBOW 90 3/8 MPT X 3/8 FPT BRASS
17	713002	2	SCR-HH 1/4-20 X .75 ZP 5
18	700014	1	NLA---VENTURI LOCNUT
19	700011	1	USE 700010 VENTURI HOUSING
20	700037	1	FILTER-EXHAUST
21	832106	6	BRKT-MOUNTING TAB
22	700029PTD	1	4/6 GAL. BOTTOM PAN PTD
23	712536	4	SCR-THMS 10-24 X .62 SS
24	700013	1	VENTURI INTAKE
25	700038	1	NLA---PERFORATED SHIELD
26	420011	2	FTG-COMPRESSION 1/2 HOSE INSERT
27	700020	1	POLY HOSE 20" LONG
28	420009	1	FITTING-ELBOW MALE 469F
29	380046	1	BALL, HOLLOW RUBBER
30	712761	1	WASHER-FENDER 1/4 X 1.25 X .059 SS
31	380045CTD	1	CAGE FLOAT ASY PVC DIPPED
32	711505	1	WASHER-FLAT 1/4 ZP
33	829285PLT	2	SPACER-.25 X .875 X .687 PLATED
34	290031	1	LID GASKET 294/6 DIECUT
35	700010	1	SINGLE VENTURI ASSY
36	715003	1	NLA--DECAL-AIR PRES 2.00 X 4.00
37	715029	1	DECAL-NAME PLATE MODEL ID

**TANK ASSEMBLY**



# TANK ASSEMBLY BOM

BILL OF MATERIAL - 750003			
ITEM	PART NO.	QTY	DESCRIPTION
1	130032	2	CAP, RETAINER
2	760083	2	WHEEL-6" 6-105 .5 ID
3	390002	1	SPRING-RETURN (390001)
4	390001	1	MLDED TRIGGER W/ 2 PINS
5	712824	2	SCR-THMS 10-24 X .75 ZP
6	710530	1	SCR-FHMS 8-32 X .50 BRASS
7	711005	4	SCR-SET 1/4-20 X .31 BLK OX CP
8	711006	3	SCR-SET 1/4-20 X .62 BLK OX CP
9	711372	1	NUT-NYLOC 8-32 ZP
10	712638	2	NUT-NYLOC 10-24 SS
11	711513	1	WASHER-FLAT .689 X 1.06 X .029 SS
12	712764	1	WASHER-FLAT #10 SS
13	711524	2	WASHER-WAVE .52 X .87 X .01
15	712764	2	WASHER-FLAT #10 SS
16	711594	2	WASHER-FLAT .56 X .88 X .03 NICKEL
17	711713	2	RET RING-E EXT .50
18	711915	4	RIVET-TUBE 3/16X.28
19	761054	2	LATCH
20	280016	2	CASTER-3" W/ 3/8 X 5/8 STEM
21	900035	1	DEFLECTOR, INTAKE
22	390087	1	GASKET DIECUT VNN
23	900055PTD	1	BRKT-WHEEL 4/6 GAL
24	900066	2	AXLE
25	390101	1	CAST ALUMINUM INTAKE-REPLACE W/ 390110 C
26	390110	1	INTAKE ASSEMBLY ALUMINUM
27	750118	1	INTAKE ASSY TUBE 4/6 GAL
28	900014	1	TANK 6G SS HIGH INTAKE
29	712320	2	WASHER-FLAT 20 X .45 X .048 NYLON
***	805041		CLOTH BG ASSY, 6G
***	761177PKG		BAG, FILTER PROTECTOR 4/6G PKG 10
***	384003PKG		BAG, PAPER 380-4/6 PKG 10
***	380049PLT		FRAME,DUST BAG PLATED

**Notes**





## Minuteman International Made Simple Commercial Limited Warranty

### REVISION P EFFECTIVE 5/1/2017

Minuteman International, Inc. warrants to the original purchaser/user that the product is free from defects in workmanship and materials under normal use. Minuteman will, at its option, repair or replace without charge, parts that fail under normal use and service when operated and maintained in accordance with the applicable operation and instruction manuals. All warranty claims must be submitted through and approved by factory authorized repair stations.

This warranty does not apply to normal wear, or to items whose life is dependent on their use and care, such as belts, cords, switches, hoses, rubber parts, brushes, electrical motor components or adjustments. Parts manufactured by Minuteman are covered by and subject to the warranties and/or guarantees of their manufacturers. Please contact Minuteman for procedures in warranty claims against these manufacturers.

**Special warning to purchaser** -- Use of replacement filters and/or pre-filters not manufactured by Minuteman or its designated licensees, will void all warranties expressed or implied. A potential health hazard exists without original equipment replacement.

All warranted items become the sole property of Minuteman or its original manufacturer, whichever the case may be.

Minuteman disclaims any implied warranty, including the warranty of merchantability and the warranty of fitness for a particular purpose. Minuteman assumes no responsibility for any special, incidental or consequential damages.

This limited warranty is applicable only in the U.S.A. and Canada, and is extended only to the original user/purchaser of this product. Customers outside the U.S.A. and Canada should contact their local distributor for export warranty policies. Minuteman is not responsible for costs or repairs performed by persons other than those specifically authorized by Minuteman. This warranty does not apply to damage from transportation, alterations by unauthorized persons, misuse or abuse of the equipment, use of non-compatible chemicals, or damage to property, or loss of income due to malfunctions of the product.

If a difficulty develops with this machine, you should contact the dealer from whom it was purchased.

This warranty gives you specific legal rights, and you may have other rights which vary from state to state. Some states do not allow the exclusion or limitation of special, incidental or consequential damages, or limitations on how long an implied warranty lasts, so the above exclusions and limitations may not apply to you.

Model	Parts	Labor	Poly	Travel**
Cord Electric Group	5yrs	3yrs	12yrs	90 days
Battery Auto Scrubbers (incl. on board charger)	5yrs	3yrs	12yrs	90 days
Battery and Manual Sweepers	3yrs	3yrs	12yrs	90 days

**Exceptions.....**

Model	Parts	Labor	Poly	Travel**
Port A Scrub, all models (incl. on board charger)	1yr	6months	12yrs	90 days
A3S Blower	1yr	1yr	0	0
Phenom Dual Motor Upright Vacuums	2yrs	2yrs	0	0
Explosion Proof Vacuum	1yr	1yr	0	0
Propane Burnisher	1yr	1yr	0	90 days
E14BQP and E14115 scrubber	1yr	1yr	12yrs	90 days
**Travel, 2 hours max				

<i>Stand-alone Battery Chargers:</i>	One year
<i>Replacement Parts:</i>	Ninety days
<i>Batteries:</i>	0-3 months full replacement, 4-12 months pro-rate
<i>Polypropylene Plastic Tanks:</i>	12yr warranty, no additional labor

# ***“Excellence Meets Clean”***

**Minuteman is a Full Line Manufacturer of Sweepers and Scrubbers,  
for Industrial Facilities.**

14N845 U.S. Route 20, Pingree Grove, IL 60140 USA  
Phone (800) 323-9420 - [www.minutemanintl.com](http://www.minutemanintl.com)  
*A Member of the Hako Group*